

Kite Manual

Category:
Model:

Kites
Helium II, Oxigen, Nitro II,
Butan
2006
Version 1.03

Valid from:
Version:

U-TURN GmbH
Paraglider & Kites
Esslingerstr.23
78054 Villingen – Schwenningen

Tel. +49 (07720) 807111 / Fax: +49 (07720) 807112
Internet: www.u-turn.de E-mail : info@u-turn.de



Copyright:

© 2004 U-Turn Paraglider & Kites, Esslingerstr.23, 78054 Villingen - Schwenningen
All rights reserved. No part of this manual may be reproduced in any form or any means
without the prior written permission of U-Turn GmbH.
Artwork: Ernst Strobl
Concept and texts: Ernst Strobl, Bill Williamson

A warm welcome at U-Turn

Thank you for your decision to handpick a U-Turn traction kite.

Please read this operating manual carefully, understand the information given and follow the instructions before you launch your new U-Turn kite.

Whether beginner or expert, choosing a U-Turn kite brings you the benefit of the highest quality and performance. Your new kite is at the forefront of its class and will prove to be a reliable partner.

This manual will provide you with more than just safety information and help getting started. There is detailed information on all U-Turn traction kites covering construction, components, function, maintenance and tips & tricks to get the best from your new kite.

If you ever have any questions please contact your authorised dealer, the distributor for your country (see www.u-turn.de) or U-Turn directly.

We recommend that you start by reading the comprehensive section "U-Turn kites" and then refer to those sections relevant to your new kite.

U-Turn wishes you lots of wind-powered fun!

You're U-Turn Team



Table of contents

<u>ATTENTION:</u>	5
<u>U-Turn Kites</u>	6
The maiden flight:	6
Wind and flight area:	6
Set-up, 1st step: (25 metres walk)	6
Set-up, 2nd step (100 metres walk)	7
Set-up, 3rd step (finally unpacking)	8
Set-up, 4th step (final lines-check before launch)	8
Launching, Steering and Landing	
The Launch	9
The Steering	10
The Landing	10
Packing and unpacking the kite	11
Packing	11
Unpacking	12
Maintenance	<u>12</u>
Proper Care	<u>12</u>
General wind-table	13
The traction-Kites	14

Beginner-Kites	15
U-Turn Helium II	15
Die Helium in portrait	16
Wind-table Helium.....	16
Fields of application	16
Technical data	17
Tipps and tricks	17
<u>Intermediate-Kites</u>	18
U-Turn Oxigen basic/pro.....	18
Wind-table Oxigen.....	19
Technical data Oxigen	19
Fields of application Oxigen basic.....	20
Fields of application Oxigen pro.	20
<u>Hochleister-Kites</u>	21
U-Turn Nitro II	21
Nitro in portrait	21
Wind-table Nitro.....	22
Technical data Nitro.....	22
Fields of application Nitro.	22
U-Turn Butan	23
Butan in portrait	23
Wind-table Nitro.....	24
Technical data Nitro.....	25

ATTENTION:

Never fly near high-voltage power lines, railway lines, roads, airports, and other people or during thunderstorms. To do so would be grossly negligent as you could endanger the lives and personal safety of others as well as yourself.

Keep a minimum distance of 500 metres from any of the objects mentioned above and 5 kilometres from airports.

Never use lines longer than 60 metres.

Traction kites can be dangerous depending on the size of kite and the strength of wind. Please pay attention to the wind table for your kite and make sure that your skills match the prevailing conditions.

Do not fly your new kite for the first few flights at the top of the wind range shown in the wind table. Please take time to get to know the equipment.

Only use a harness after you have developed a real command of your kite and only use a harness that allows you to quickly disconnect in case of danger. Our authorised dealers will be happy to provide safety advice.

Strong shoes or boots are highly recommended, as are helmet, gloves, elbow and kneepads. **Sit down whilst launching your kite if you are not sure how much pull it will develop.**

Before using your kite to pull your buggy or board you must have a good command of the kite.

Never underestimate the power of your kite. The classification (Beginner, Intermediate, High-Performance) refers to the manageability and power delivery in certain situations. Even a beginner kite can develop several hundred kilos of pull depending on kite size and wind strength.

The manufacturer disclaims liability for any damage caused by inappropriate use of the kite.

U-Turn Kites

The maiden flight:

The maiden flight with a new kite always is a special and thrilling moment. Perhaps it is your first flight of all. Probably you had a briefing with your authorised dealer. However, we ask you to carefully read the following, even if you can't wait to get started.

Wind and flight area:

Please have a look at the wind table on page X and measure the current wind strength. Now have a look at the wind table of your new kite and notice the wind speed and the size of your kite. The wind strength should be in the lower range of that shown for your weight. If the wind is too strong: Just sit down and read the manual again.

Before you start the set-up, please have a good look around and make sure there is enough space for an enjoyable flight. To the left, the right, in front of you: No high-voltage transmission line? No road, no ditches, no airports far and wide? O.K. – let's start now.

Set-up, 1st step: (25 metres walk)

Please find the spot you want to stand when launching the kite and place the handles there. Now enjoy a short walk forwards (25 metres, with the wind at your back). Don't forget your kite, ground stake and lines on the winder. If a ground stake is not available, a strong stick will be sufficient. After 25 metres you can put down your kite-bag and drive the anchor (or stick) into the ground.



Set-up 2nd step (100 metres walk)

Abb. 1



Now please take the winder and uncoil the first two lines (usually these are the brake-lines). In order to do this, just hang the loop over the ground stake – and walk towards the handles. We recommend separating the lines, as seen in image 1, right from the beginning.

Abb. 2



After having completely unwound these lines, you should lay the ends shoulder width apart. Now take your handles and attach the lines to the lower attachment point of the handles.

Abb. 3



The Brake-line is always thinner than the flying-line. See image 2.

Abb. 4



After having tied each end to a handle, enjoy your relaxed walk back to the ground stake (please don't forget the winder). Now you repeat the procedure with the flying-lines (or the brake-lines, depending on how they were wound onto the winder). You attach the flying-lines to the top of the handles. Now it is time to fetch the ground anchor, to lay out the ends of the lines (brake-lines outside, flying-lines inside) and to arrange the handles as shown in image 4.

Abb. 5



Now you may think that it would be better to have a second ground stake. Be patient, later you will need only one. What's next? That's right, walk back to your kite.

Set-up 3rd step (finally unpacking)



Reaching the kite, you take it out of the bag (which you should immediately put into your pocket, otherwise you will have to run after it because of the wind...) and lay it out as shown in image x to x. Depending on the wind you should keep an eye on it, so that it does not blow away. If you are on a beach, you can put some sand on the trailing edge to hold it down.



First of all, fix both brake-lines at the knot near the end of the brake bridle (see image X, difference between brake and main bridle). Now the kite can't move away. The next step is to connect the flying-lines to the main bridle. Be careful not to cross any lines or to twist them. Now you step behind your kite, pulling it back carefully, until all lines are under tension. Now you are able to see whether anything is twisted. If all lines are OK, you can now walk for the last time back to your handles.

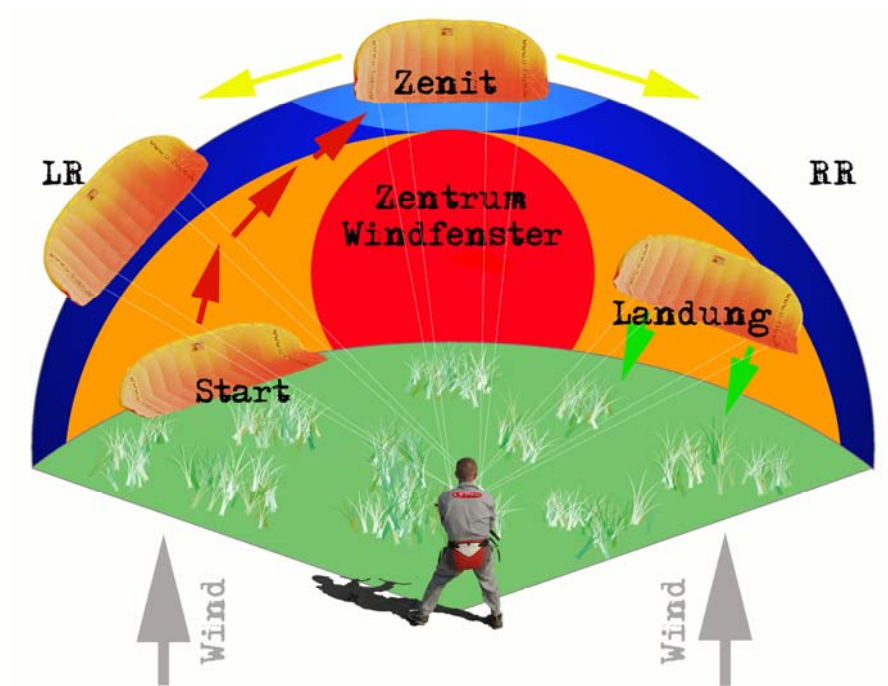
Set-up 4th step (final lines-check before launch)

Now you take your handles. **Keep the brakes applied so that the kite stays on the ground! (see image 8)** Please make sure that the right hand lines run to the right side of the kite and the left hand lines to the left. If everything is OK, place the handles over the ground stake (see image X) and read "Launching, Steering and Landing"

Launching, Steering and Landing

The Launch

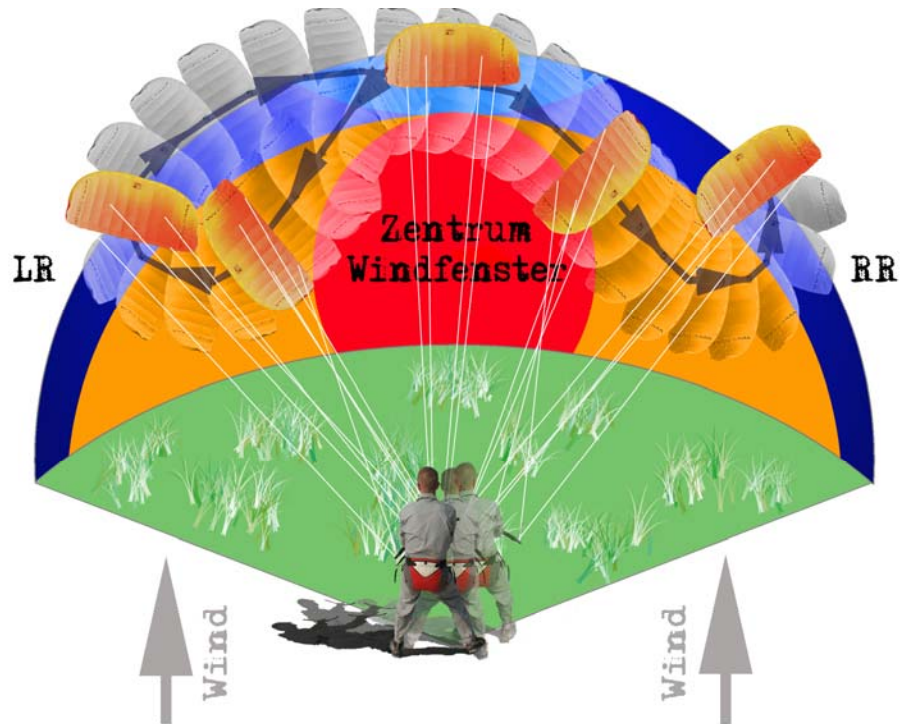
The range that your kite flies in is called the wind window. On the windows left and right edge and at the zenith, the kites' traction power is lowest. The closer the kite flies to the centre of the window, the more traction power appears. For this reason, you should not launch your kite in the centre, but on the right or left side of the wind window.



Hold the handles near the top in your hands (one in each hand), so that the brake-lines can hang free. With a firm tug, equal at both handles, the kite will rise. Let it rise up to the zenith. This is the starting point for anything to come.

The Steering

By pulling one handle, you can change the flight direction of your kite. Pull on the left handle and the kite will fly to the left, pull on the right handle and the kite will fly to the right. You can boost the steering effect by tipping the lower end of the handles (where the break-lines are attached) towards you. When doing this, the kite will not only be turned quicker, but also partly braked. Please practise this until you master this manoeuvre.

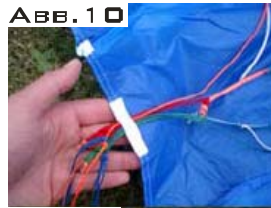


The Landing

To touch down, fly your kite into the left or right upper area of the wind window and then tip the bottom of both handles equally towards you. The kite will fly backwards and will touch down in a controlled manner. If the kite breaks out to one side, just pull the handle on the opposite side towards you.

Packing and unpacking the kite

Packing



After having enjoyed your first flight with your U-Turn kite and having performed a perfect touchdown, now is the time to pack up. There is no need to untie all the lines and to coil them on the winder. Go to the kite, bring together all lines at the bridle connections (without twisting them) and fix them to the Velcro tab on the trailing edge. This keeps your bridle lines in good condition and free from tangles so you can start quickly on your next flying day.

Lay the bridle on the kites' lower side and fold the kite as shown in image 10 to 15. After putting the kite in the bag, walk back to your handles and coil the lines as shown in images 16 to 20.

IMPORTANT:

Remember the direction you are coiling the lines, as you have to uncoil them in the opposite direction or they will be badly twisted. For example: Hold the handles in the right hand and hold the lines together in the left. Rotate clockwise with the left hand in order to coil the lines round the handles. To uncoil, hold the handles in the right hand again and unwind anti-clockwise with the left hand.



Unpacking

The next time you go to a beach or field with your ready to fly kite, you do the following:

- Place your kite-bag where the kite will be launched.
- Take out the handles and uncoil the lines, walking backwards against the wind.
- IMPORTANT: Bear in mind the direction you chose while coiling the lines and unwind the opposite way.
- After uncoiling the lines completely, place the handles over the ground stake as shown in image X.
- Now take the kite out of the bag, lay it out and Stand behind the kite.
- Hold carefully onto the top of the kite (don't pull at the cell openings) and pull it smoothly backwards, until the lines are tensioned.
- Now the kite will stand half inflated on the ground. You can pick up your handles, check that the lines are not twisted and launch the kite.

Maintenance

Proper Care

U-Turn products are subject to meticulous quality control, materials as well as workmanship. However, it's mainly up to you to determine the durability of the equipment. Proper care and good maintenance help you to have fun with the kite for a very long time. Coiling the lines and folding the kite carefully, always storing it clean and dry does a lot for a long lifetime of the kite.

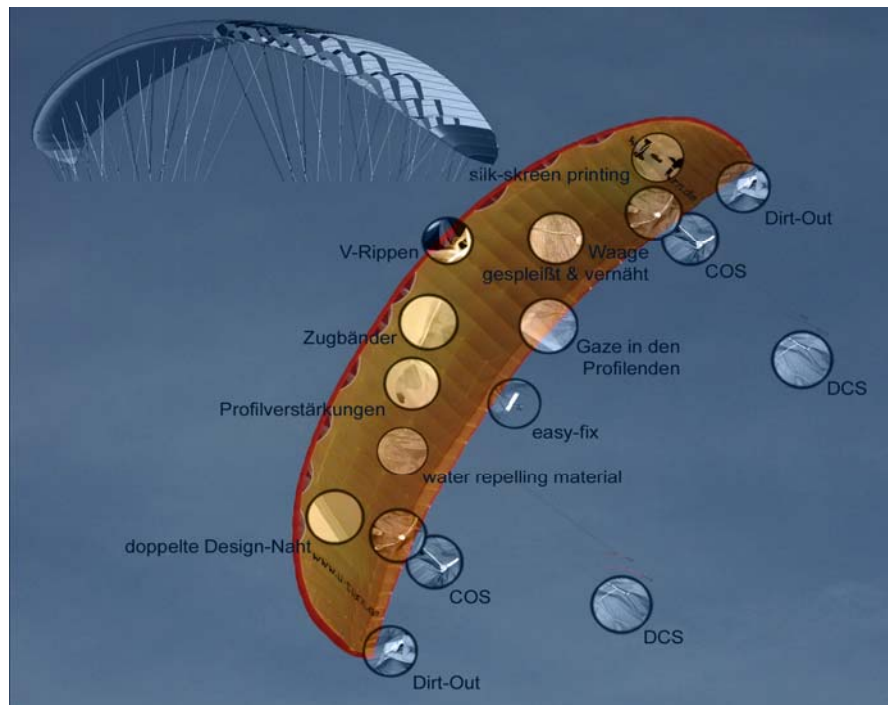
Please note the following:

- Hang up wet kites to dry, cell openings down. Never leave wet kites in the bag.
- Open Dirt-Outs before drying
- Always remove sand before packing the kite (inside and outside). Dry sand may be removed by flying the kite with the dirt-outs open.
- Don't expose your kite to the sun longer than necessary
- Fold your kite loosely (no sharp bends or tight folds)
- To eliminate salt-water, rinse the kite with clean fresh water inside and out. (Immersion in the bath is OK, but don't soak or put it in the washing-machine.)
- Don't clean the kite with too much force, never use solvents or any cleaning supplies.

General wind-table

BFT	M/S	KM/H	MPH	Knoten	Bezeichnung
0	0 – 0,2	0 – 0,8	0 – 0,6	0 – 0,5	Stille
1	0,3– 1,5	0,9 – 5,5	0,7 – 3,5	0,6 – 3,0	leiser Zug
2	1,6– 3,3	5,6– 12,1	3,6 – 7,5	3,1 – 6,5	leichte Brise
3	3,4 – 5,4	12,2– 19,6	7,6 – 12,2	6,6 – 10,5	schwache Brise
4	5,5 – 7,9	19,7– 28,5	12,3 – 17,8	10,6–15,5	mäßige Brise
5	8,0 – 10,7	28,6– 38,8	17,9 – 24,0	15,6–20,9	frische Brise
6	10,8– 13,8	38,9 –49,8	24,1 – 31,0	21,0–26,9	starker Wind
7	13,9– 17,1	49,9– 61,7	31,1 – 38,3	27,0–33,3	steifer Wind
8	17,2– 20,7	61,8– 74,6	38,4 – 46,4	33,4–40,3	stürmischer Wind
9	20,8– 24,4	74,7– 88,0	46,5 – 54,7	40,4–47,5	Sturm
10	24,5– 28,4	88,1-102	54,8 – 63,6	47,6–55,3	schwerer Sturm
11	28,5– 32,6	102,1–117	63,7 – 73,0	55,4–63,4	orkanartiger Sturm
12	32,7 +	117,1 +	73,1 +	63,5 +	Orkan

The traction-Kites



Beginner-Kites

U-Turn Helium II



For those, who not only would, but really want...

You are a kite-beginner, looking for the suitable kite? When you are looking for a piece of sport equipment that is forgiving mistakes and making thrust? Then the Helium is perfect for you. Due to his wide size-range our kite will accompany you until you're pro-era. Show the Helium that you know your stuff, because the Helium will do the same...

Wind-table Helium II

Wind speed Bft.	1,8 m ²			2,2 m ²			2,8 m ²			3,5 m ²			4,4 m ²			5,5 m ²			6,8 m ²			Wind speed Bft.	
	Gewicht			Gewicht			Gewicht			Gewicht			Gewicht			Gewicht							
	60	75	90	60	75	90	60	75	90	60	75	90	60	75	90	60	75	90	60	75	90		
9,0 - 9,5	x	x	x			x																9,0 - 9,5	
8,5 - 9,0	x	x	x		x	x			x														8,5 - 9,0
8,0 - 8,5	x	x	x	x	x	x			x	x													8,0 - 8,5
7,5 - 8,0	x	x	x	x	x	x	x	x	x			x											7,5 - 8,0
7,0 - 7,5	x	x		x	x	x	x	x	x			x	x										7,0 - 7,5
6,5 - 7,0	x			x	x	x	x	x	x	x	x			x									6,5 - 7,0
6,0 - 6,5				x	x	x	x	x	x	x	x	x		x	x								6,0 - 6,5
5,5 - 6,0				x			x	x	x	x	x	x	x	x	x		x						5,5 - 6,0
5,0 - 5,5							x	x		x	x	x	x	x	x		x	x					5,0 - 5,5
4,5 - 5,0							x			x	x	x	x	x	x	x	x	x			x		4,5 - 5,0
4,0 - 4,5										x	x		x	x	x	x	x	x			x	x	4,0 - 4,5
3,5 - 4,0										x			x	x	x	x	x	x			x	x	3,5 - 4,0
3,0 - 3,5													x	x		x	x	x			x	x	3,0 - 3,5
2,5 - 3,0													x			x	x	x			x	x	2,5 - 3,0
2,0 - 2,5																x	x				x	x	2,0 - 2,5
1,5 - 2,0																x					x	x	1,5 - 2,0
1,0 - 1,5																					x	x	1,0 - 1,5
0,5 - 1,0																					x	x	0,5 - 1,0

Fields of application

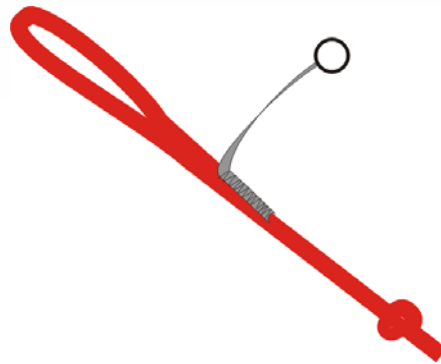
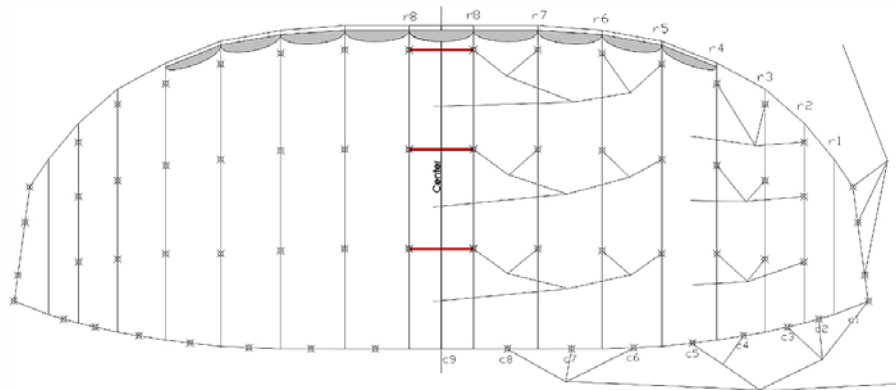
- Upper-sail, sub-sail, ribs 44g/m² Ripstop Nylon
- Balance lines Silverguard XT, 50 kg collapse load
- Recommended fly/brake-lines 150 kg/120 kg

	Starter	Intermediate	Profis/Racer
Fun/Power Kiting:	+++	++	+
Buggy-Kiting:	+++	+	-
Beachboard-Kiting:	+++	+	-
Snow-Kiting:	+++	+	-

Legend: +++perfect ++ super + O.K. - please not

Technical data

Technical Data Helium II										
Model	Wing area (m ²)		Wing span (m)		Aspect ratio		Wing cord (m)		Cells	Line
	flat	project	flat	project	flat	project	Middle / Stabi		length (m)	
Helium II	1,8 m ²	1,800 m ²	1,56 m	2,37 m	1,9 m	3,13	2,37	0,89m / 0,32m	17	~ 1,4 m
Helium II	2,2 m ²	2,250 m ²	1,95 m	2,85 m	2,1 m	3,13	2,37	1,00m / 0,35m	17	~ 1,5 m
Helium II	2,8 m ²	2,820 m ²	2,45 m	2,97 m	2,4 m	3,13	2,37	1,12m / 0,40m	17	~ 1,7 m
Helium II	3,5 m ²	3,520 m ²	3,06 m	3,32 m	2,6 m	3,13	2,37	1,25m / 0,44m	17	~ 1,9 m
Helium II	4,4 m ²	4,408 m ²	3,83 m	3,71 m	3,0 m	3,13	2,37	1,40m / 0,50m	17	~ 2,2 m
Helium II	5,5 m ²	5,500 m ²	4,78 m	4,15 m	3,3 m	3,13	2,37	1,58m / 0,58m	17	~ 2,4 m
Helium II	6,8 m ²	6,850 m ²	5,95 m	4,63 m	3,7 m	3,13	2,37	1,75m / 0,62m	17	~ 2,7 m
Helium II	8,5 m ²	8,550 m ²	7,45 m	5,17 m	4,2 m	3,13	2,37	1,95m / 0,69m	17	~ 3,0 m



Intermediate-Kites

U-Turn Oxigen basic/pro.



The rusher among the intermediates!

Your U-Turn Oxigen basic provides implemented action. Whatever you need the power for: In the buggy, on the board or in the snow – you will need him like the air you breathe. Fast and powerful he treats the wind energy. The Oxigen is highly resistant to collapses and very forgiving any mistakes. When the stream appears, the Oxigen pulls you forwards. Do you want to work actively? Our kite will convince you with outstanding agility. For beginners we recommend minimum 25-metres-lines and to open the dirt-out. You always can recognize the Oxigen basic by the white sub-sail.

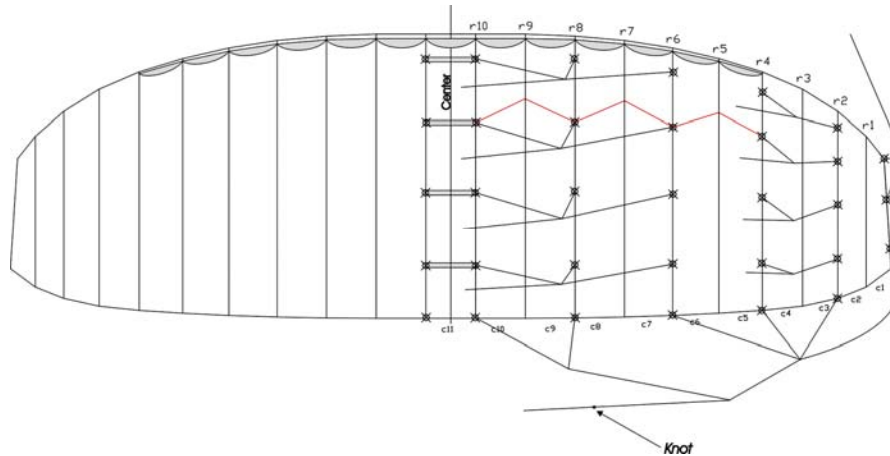
Warning: This kite is addictive!

Wind-table Oxigen

Wind speed Bft.	2,0 m ²			2,5 m ²			3,2 m ²			4,0 m ²			5,0 m ²			6,2 m ²			7,8 m ²			9,75 m ²			Wind speed Bft.	
	Gewicht	Gewicht	Gewicht	Gewicht	Gewicht	Gewicht	Gewicht	Gewicht	Gewicht	Gewicht	Gewicht	Gewicht	Gewicht	Gewicht	Gewicht	Gewicht	Gewicht	Gewicht	Gewicht	Gewicht	Gewicht	Gewicht				
	60	75	90	60	75	90	60	75	90	60	75	90	60	75	90	60	75	90	60	75	90	60	75	90		
9,0 - 9,5																									9,0 - 9,5	
8,5 - 9,0			x																							8,5 - 9,0
8,0 - 8,5		x	x																							8,0 - 8,5
7,5 - 8,0	x	x	x			x																				7,5 - 8,0
7,0 - 7,5	x	x	x			x	x																			7,0 - 7,5
6,5 - 7,0	x	x	x			x	x	x																		6,5 - 7,0
6,0 - 6,5	x	x	x			x	x	x																		6,0 - 6,5
5,5 - 6,0	x	x	x			x	x	x				x														5,5 - 6,0
5,0 - 5,5	x	x				x	x	x			x															5,0 - 5,5
4,5 - 5,0	x					x	x	x			x															4,5 - 5,0
4,0 - 4,5						x	x				x	x			x											4,0 - 4,5
3,5 - 4,0						x					x	x	x		x	x										3,5 - 4,0
3,0 - 3,5											x	x	x		x	x										3,0 - 3,5
2,5 - 3,0											x	x	x		x	x	x									2,5 - 3,0
2,0 - 2,5											x				x	x	x									2,0 - 2,5
1,5 - 2,0															x	x	x									1,5 - 2,0
1,0 - 1,5																										1,0 - 1,5
0,5 - 1,0																										0,5 - 1,0

Technical data Oxigen

Technische Daten U-Turm Oxigen										
Model	Fläche (m ²)		Spannweite (m)		Streckung		Flächentiefe (m)		Zellen	mittlere Waaglänge
	ausg.	proj.	ausg.	proj.	ausg.	proj.	Mitte / Stabi			
Oxigen	2,04 m ²	2,037 m ²	1,818 m	2,691 m	2,317 m	3,55	2,95	0,870m/0,338m	21	1,8m
Oxigen	2,55 m ²	2,555 m ²	2,281 m	3,014 m	2,595 m	3,55	2,95	0,975m/0,379m	21	1,8m
Oxigen	3,20 m ²	3,200 m ²	2,847 m	3,372 m	2,899 m	3,55	2,95	1,091m/0,424m	21	2,0m
Oxigen	4,00 m ²	3,997 m ²	3,568 m	3,769 m	3,245 m	3,55	2,95	1,219m/0,474m	21	2,2m
Oxigen	5,00 m ²	4,996 m ²	4,460 m	4,214 m	3,629 m	3,55	2,95	1,363m/0,530m	21	2,5m
Oxigen	6,25 m ²	6,249 m ²	5,579 m	4,713 m	4,058 m	3,55	2,95	1,524m/0,593m	21	2,8m
Oxigen	7,80 m ²	7,764 m ²	6,931 m	5,253 m	4,523 m	3,55	2,95	1,699m/0,661m	21	3,1m
Oxigen	9,75 m ²	9,749 m ²	8,714 m	5,821m	5,072 m	3,55	2,95	1,905m/0,791m	21	3,4m



Fields of application Oxigen basic

- Upper-sail, sub-sail, ribs 44g/m2 Ripstop Nylon
- Balance lines Dyneema
- Sub-sail white

	Starter	Intermediate	Profis/Racer
Fun/Power Kiting:	+	+++	+
Buggy-Kiting:	++	+++	+
Beachboard-Kiting:	++	+++	+
Snow-Kiting:	++	+++	+

Legend: +++perfect ++ super + O.K. – please not

Fields of application Oxigen pro.

- Upper sail, sub-sail, ribs
- Porcher Marine NCV PA 6.6 high tenacity
- Special, water repellent coating
- Balance-lines coated with Kevlar
- Sub-sail in main colour upper-sail

	Starter	Intermediate	Profis/Racer
Fun/Power Kiting:	+	+++	+
Buggy-Kiting:	++	+++	+
Beachboard-Kiting:	++	+++	+
Snow-Kiting:	++	+++	+

Legend: +++perfect ++ super + O.K. – please not

High performance -Kites

U-Turn Nitro II



...explosive power!

You are a professional pilot and you like to reach your limits?!

Then face the overwhelming power of U-Turn's Nitro. When you take it for the first time and the cap is standing really stretched above you, you realize: "...Everything so far was pleasure...now the gloves are taken off." The U-Turn Nitro pushes you to the limit. Pilot faults are punished immediately. But when you have a good command and the stream appears, the Nitro shows its real face. It is an outperforming power-packet with impressive agility, dedicated for absolute professionals. By the way: It is the best-designed sail at the sky. Just an aero-dynamic masterpiece.

BUTAN

... high performance in series

The new BUTAN is available and in stock. This high-end-kite is dedicated to ambitious kites and those who want to start competitive kiting, perhaps with first experiences in racing. The new kite's position is between our intermediate OXIGEN and our race-model NITRO.

Power, power and again power – that's the promise of the BUTAN. The new kite is a further development of the Raptor II, which made designer Ernst Strobl well known as one of the leading constructors in the scene. After lots of tests and computer-aided design improvements the handling of the BUTAN is much more easier and forgiving than you would expect from such a powerful kite. So the pilot always can get the best of this innovative canopy. There is almost no shooting forward. Important: When other kites are already lying on the beach or the grasslands, this canopy is still giving propulsion, because it stays longer at the sky even under difficult wind conditions.

The BUTAN is available in sizes 2,5/3,5/4,5/5,5/6,5 (each with 26 cells) and 7,5/9,0/11,0 and 13,0 (each with 32 cells). With this range the pilot will always find the suitable kite to any wind conditions. The kite is equipped with Dyneema lines as well as with the innovative sailcloth Aqua Ripstop. Both the surface and the sub-sail are designed in attractive colour combinations with the typically U-Turn-claw. As a matter of course the BUTAN provides features like Easy Fix, Dirt-Outs and V-Tapes.

The BUTAN is suitable for all purposes. With the buggy on the beach, the all-terrain-board on the grasslands or just for playing with nature's power – lots of fun are always guaranteed. In time to the winter-season we will provide special adjusted paraphernalia for ski- or snowboard use.



Wind-table Butan

Wind table Butan																												
Wind speed	2.5 m ²			3.5 m ²			4.5 m ²			5.5 m ²			6.5 m ²			7.5 m ²			9.0 m ²			11.0m ²			13.5m ²			Wind speed
	Gewicht			Gewicht			Gewicht			Gewicht			Gewicht			Gewicht			Gewicht			Gewicht						
Bft.	60	75	90	60	75	90	60	75	90	60	75	90	60	75	90	60	75	90	60	75	90	60	75	90	60	75	90	Bft.
8,5 - 9,0			x																								8,5 - 9,0	
8,0 - 8,5		x	x																								8,0 - 8,5	
7,5 - 8,0	x	x	x																								7,5 - 8,0	
7,0 - 7,5	x	x	x	x	x	x																					7,0 - 7,5	
6,5 - 7,0	x	x	x	x	x	x																					6,5 - 7,0	
6,0 - 6,5	x	x	x	x	x	x	x	x																			6,0 - 6,5	
5,5 - 6,0	x	x	x	x	x	x	x	x	x	x																	5,5 - 6,0	
5,0 - 5,5	x	x		x	x	x	x	x	x	x	x	x															5,0 - 5,5	
4,5 - 5,0	x			x	x	x	x	x	x	x	x	x	x	x													4,5 - 5,0	
4,0 - 4,5				x			x	x	x	x	x	x	x	x	x	x											4,0 - 4,5	
3,5 - 4,0							x			x	x	x	x	x	x	x	x										3,5 - 4,0	
3,0 - 3,5										x			x	x	x	x	x	x	x								3,0 - 3,5	
2,5 - 3,0													x			x	x	x	x	x	x	x	x	x	x		2,5 - 3,0	
2,0 - 2,5															x			x	x	x	x	x	x	x	x		2,0 - 2,5	
1,5 - 2,0																		x			x	x	x	x	x		1,5 - 2,0	
1,0 - 1,5																												1,0 - 1,5
0,5 - 1,0																												0,5 - 1,0

Technical data Butan

TECHNICAL DATA BUTAN										
Model	Wing area (m ²)		Wing span (m)		Aspect ratio		Wing cord (m)		Cells	Line length (m)
	flat	project	flat	project	flat	project	Middle / Stabi			
Butan 2,5 m ²	2,5 m ²	2,24m ²	3,44m	2,94m	4,74	3,86	0,877m / 0,202m		28	2,00
Butan 3,5 m ²	3,5 m ²	3,14m ²	4,07m	3,49m	4,74	3,86	1,038m / 0,239m		26	2,40
Butan 4,5 m ²	4,5 m ²	4,04m ²	4,82m	3,95m	4,74	3,86	1,177m / 0,271m		26	2,70
Butan 5,5 m ²	5,5 m ²	4,97m ²	5,10m	4,41m	4,74	3,85	1,301m / 0,300m		28	3,00
Butan 6,5 m ²	6,5 m ²	5,84m ²	5,55m	4,75m	4,74	3,86	1,414m / 0,326m		26	3,20
Butan 7,5 m ²	7,5 m ²	6,73m ²	5,96m	5,10m	4,74	3,87	1,519m / 0,351m		32	3,50
Butan 9,0 m ²	9,0 m ²	8,08m ²	6,47m	5,59m	4,74	3,87	1,664m / 0,384m		32	3,80
Butan 11,0 m ²	11,0 m ²	9,88m ²	7,22m	6,18m	4,74	3,87	1,840m / 0,425m		32	4,20
Butan 13,5 m ²	13,5 m ²	12,13m ²	8,00m	6,84m	4,74	3,87	2,038m / 0,471m		32	4,90

	Starter	Intermediate	Profis/Racer
Fun/Power Kiting:	+	+++	+++
Buggy-Kiting:	++	+++	+++
Beachboard-Kiting:	++	+++	+++
Snow-Kiting:	++	+++	+++

Legend: +++perfect ++ super + O.K. - please not

